

How to upgrade from SQL-Server V7 to SQL-Server 2000

Carl Aaby

This document is not to be reproduced in whole or in
part without permission in writing from:

TANDBERG

1 OVERVIEW..... 2

1.1 REVISION HISTORY 2

1.2 PREFACE..... 2

2 START 2

2.1 STOPPING SERVICES 2

2.2 DETACH DATABASE AND MOVE OLD DATABASE..... 3

2.3 UNINSTALL SQL-SERVER 7 3

2.4 COPY DATABASE..... 4

2.5 ATTACH DATABASE 4

1 Overview

1.1 Revision History

Rev	Date	Author	Change Note
01	15.12.04	CHA	Initial revision

1.2 Preface

This document describes how to upgrade your already installed TMS SQL-Server database from version 7 to 2000. The last version TMS shipped with V7 of this database was TMS v5, so if you have upgraded your TMS server from version 5 or earlier you need to upgrade your database to support TMS v9.5 or higher. If you have installed a fresh TMS from version 6 or later, you have already SQL-Server 2000 installed, and you do not need to make any changes to your database installation.

This procedure can be performed at anytime during the usage of TMS (requires a relatively short time where TMS does not work), but you will need to restart the services afterwards if this is not done in relation to an upgrade of TMS.

2 Start

2.1 Stopping services

Here is how you proceed.

Stop the following services on your TMS server if they run:

- TMSDatabaseScannerService
- TMSLiveService
- TMSPLCMDirectoryService
- TMSSchedulerService
- TMSWatchdogServiceStarter
- IIS Admin Service
- TMSWatchdogScanner
- TMSWatchdogTrapHandler
- Aplwr
- TMSWatchdog
- TmsTelnetService
- TMSWatchdogNetworkScanner

- TMSDirectoryService

Please note that not all of these services are present on your server, as this lists all the services that TMS historically has added. Depending on the version of TMS you have installed you will have several, but not all of these installed.

Going into the control panel, and selection administrative tools/services can do this.

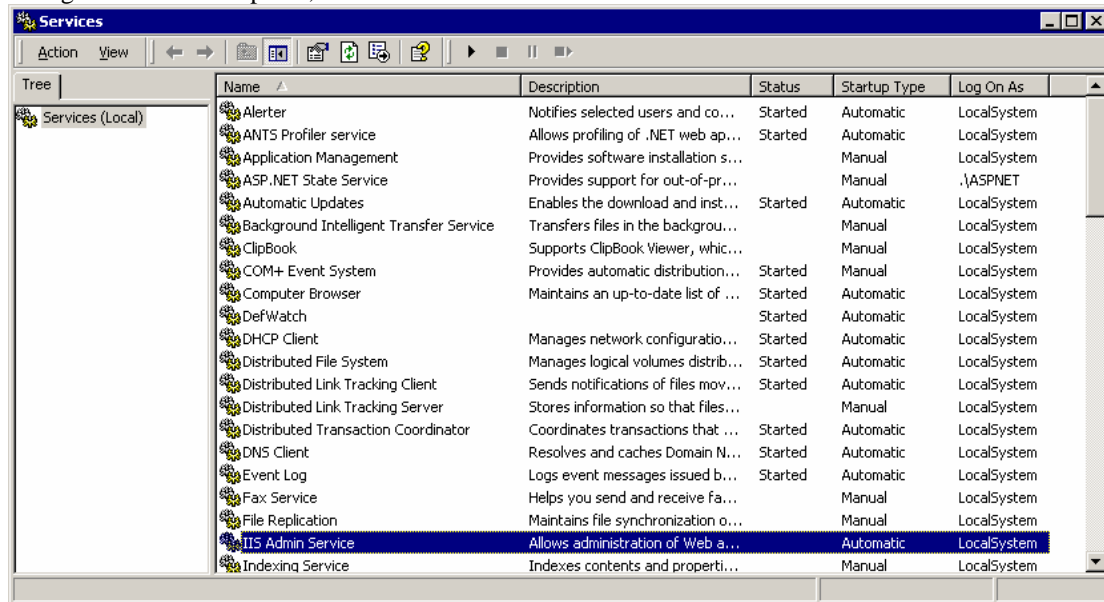


Figure 1. A snapshot of the services window under Windows 2000 Server

2.2 Detach database and move old database

Open a command line window either from the start menu by choosing run, and type cmd, or select the 'Command Prompt' option in the Start Menu, under Accessories.

If you are running TMS 8 or 7, you should write do the following:

Write 'osql -U sa -P ***** -Q "sp_detach_db tmsdb"' where ***** is the password of the administration account of the database. You should get a confirmation message that the database is detached. Copy the file *tmsdb.mdf* located under C:\MSSQL7\Data to another location, preferable on another partition on the server, or to another server on the network.

If you are running TMS 9, you should do the following:

Write 'osql -U sa -P ***** -Q "sp_detach_db tmsng"' where ***** is the password of the administration account of the database. You should get a confirmation message that the database is detached. Copy the file *tmsng.mdf* located under C:\MSSQL7\Data to another location, preferable on another partition on the server, or to another server on the network.

2.3 Uninstall SQL-Server 7

From the desktop icon of the SQL-Server, choose stop, and then exit. The icon for the database should no longer be visible.

Go into Add/Remove Programs in the control panel, and locate the Microsoft SQL Server Desktop Engine. Choose Remove to uninstall the database engine.

Delete the C:\Program Files\Microsoft SQL Server directory and all of its contents.

Install SQL-Server 2000

Download the MSDE 2000 from <http://www.microsoft.com/sql/msde/downloads/download.asp>.

Unpack the file to a chosen directory, and open a command prompt to that directory (See 2.2 for how to open a command prompt.) Start the installation by typing the following 'setup sapwd="*****" securitymode="sql"', where ***** is the password you would like to have on the database server.

2.4 Copy database

Copy the original tmsng.mdf of tmsdb.mdf file you save to a different location back to C:\Program Files\Microsoft SQL Server\MSSQL\Data directory.

2.5 Attach database

From a command line interface (same as in 2.2) write 'osql -U sa -P ***** -Q "sp_attach_db tmsng, 'C:\Program Files\Microsoft SQL Server\MSSQL\Data\tmsng.mdf"' if your old databasefile is named *tmsng.mdf*, if your database file is named *tmsdb.mdf*, then write 'osql -U sa -P ***** -Q "sp_attach_db tmsdb, 'C:\Program Files\Microsoft SQL Server\MSSQL\Data\tmsdb.mdf"'

You are now able to install TMS v9.5 or higher, and all you data will be retained.